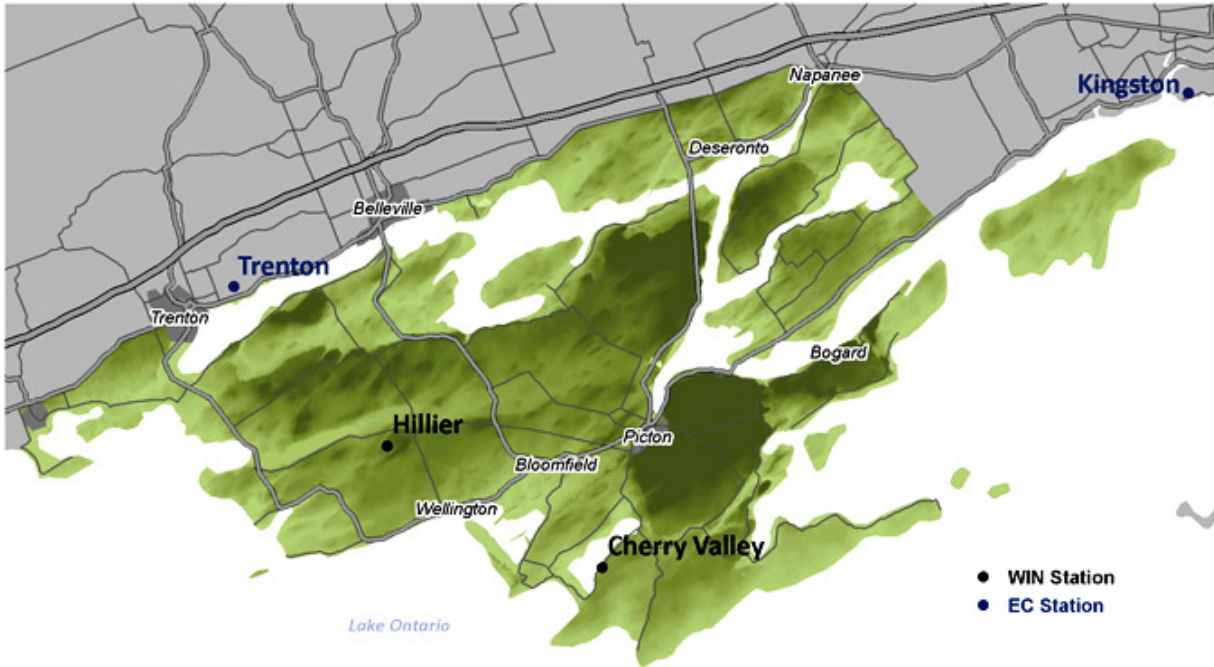




Weather INnovations Incorporated



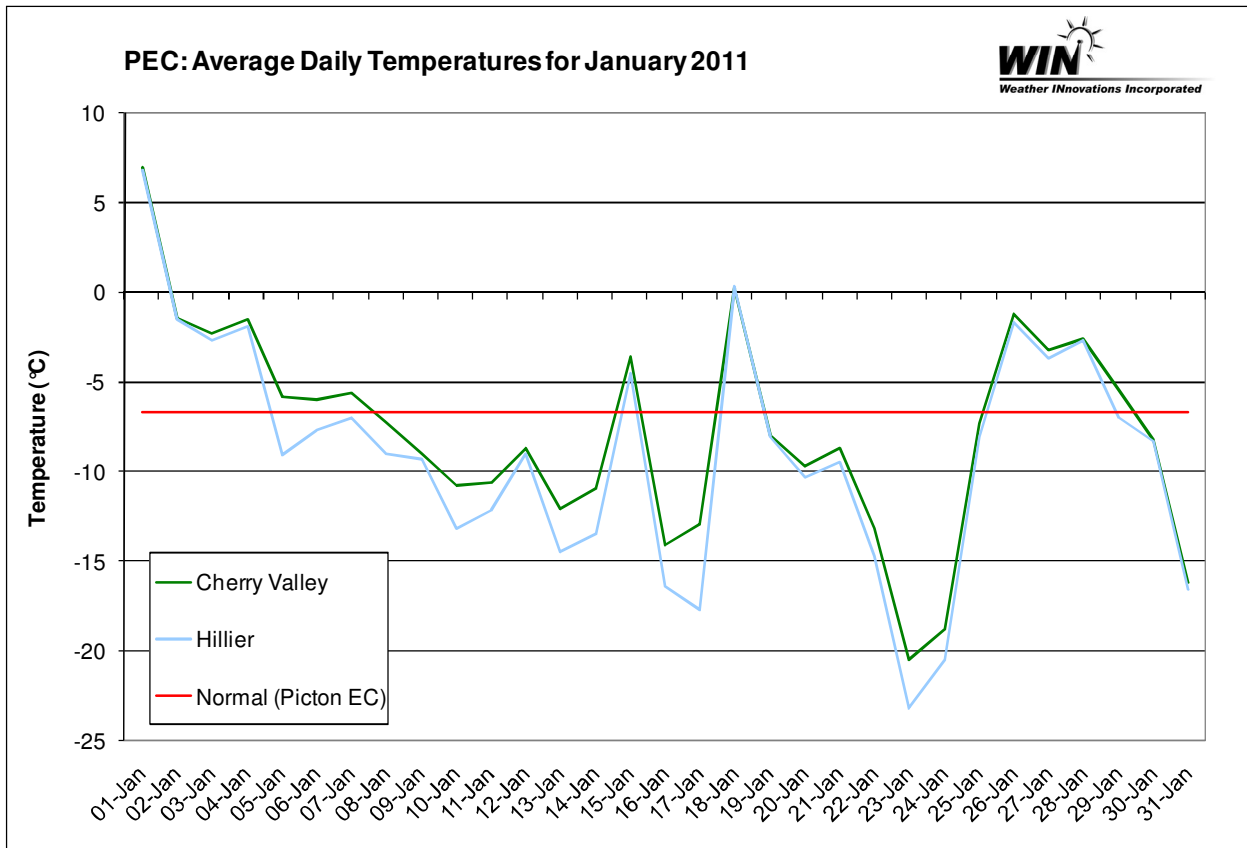
January 2011: Temperature & Icewine Hours Summary Prince Edward County

WIN Staff
February 8, 2011



OVERVIEW

January 2011 brought two critically cold overnight periods: the first occurred on the 16th-17th and the second occurred on the 23rd-24th. Temperatures fell below -25°C during these challenging nights, with the lowest temperature reaching -35.2°C at the Hillier station. The average monthly temperature was -7.7°C at Cherry Valley and -8.9°C at Hillier: 1.0°C and 2.2°C below normal respectively. These statistics are based on Environment Canada's 30-year normal for Picton. This summary illustrates minimum January 2011 temperatures, as well as the icewine harvest opportunities that arose. For this report, icewine hours are defined as instances when the average hourly temperature ranged between -8.0°C and -12.0°C, inclusive. Events are focused at opportunities encompassing a minimum 6 hour period.



TEMPERATURE ANALYSIS

The January 2011 monthly minimum temperature for each site was -26.0°C at the Cherry Valley station (compared to -24.3°C in January 2010) and -35.2°C at the Hillier station (compared to -27.1°C in January 2010). Note that there was only 1 daily minimum temperature for each station that remained above 0°C, occurring on the first day of January. There were 25 days when temperatures, at one or more stations, dipped into ice wine temperature ranges (compared to only 18 days in January 2010).

PEC: January 2011 Daily Minimums

Date	Cherry Valley	Hillier
1-Jan	4.6	4.6
2-Jan	-4.4	-4.5
3-Jan	-4	-4.3
4-Jan	-3.3	-7.6
5-Jan	-10.5	-20.3
6-Jan	-11.1	-18.9
7-Jan	-12.2	-19.3
8-Jan	-11.6	-18.8
9-Jan	-12.5	-13.9
10-Jan	-13.6	-20.3
11-Jan	-13.8	-19.9
12-Jan	-9.9	-17.2
13-Jan	-16.2	-24.3
14-Jan	-17.6	-23.7
15-Jan	-6.3	-9.2
16-Jan	-24.7	-32.7
17-Jan	-25.9	-34.2
18-Jan	-2.4	-11.6
19-Jan	-11.2	-11.1
20-Jan	-13	-21.3
21-Jan	-13	-18.5
22-Jan	-19.1	-27.1
23-Jan	-25.5	-35.2
24-Jan	-26	-28
25-Jan	-13.2	-15.3
26-Jan	-3.4	-3.3
27-Jan	-5.7	-8.3
28-Jan	-4.4	-4.8
29-Jan	-9.9	-17
30-Jan	-14.2	-18.5
31-Jan	-21.8	-26.1



Weather INnovations Incorporated

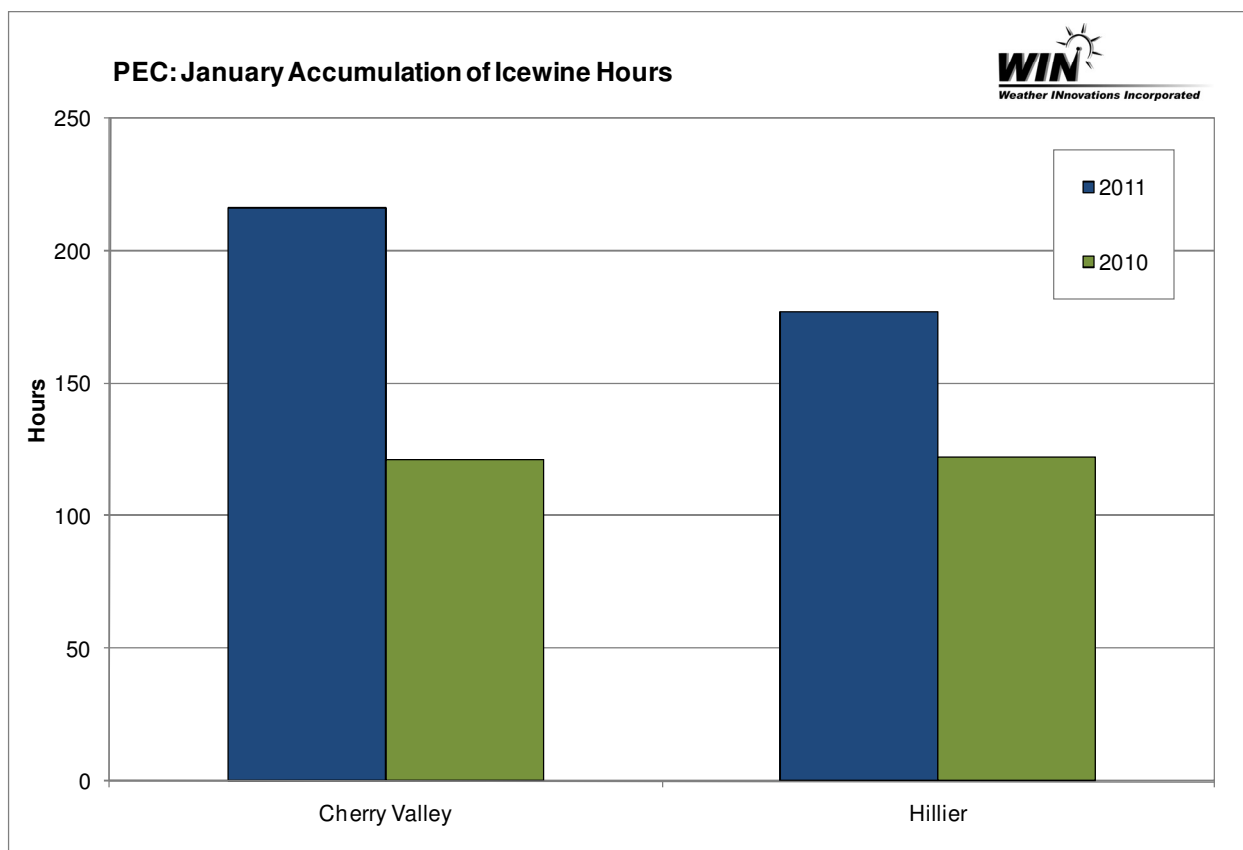
	Days with Icewine Temperatures
	Monthly Minimum

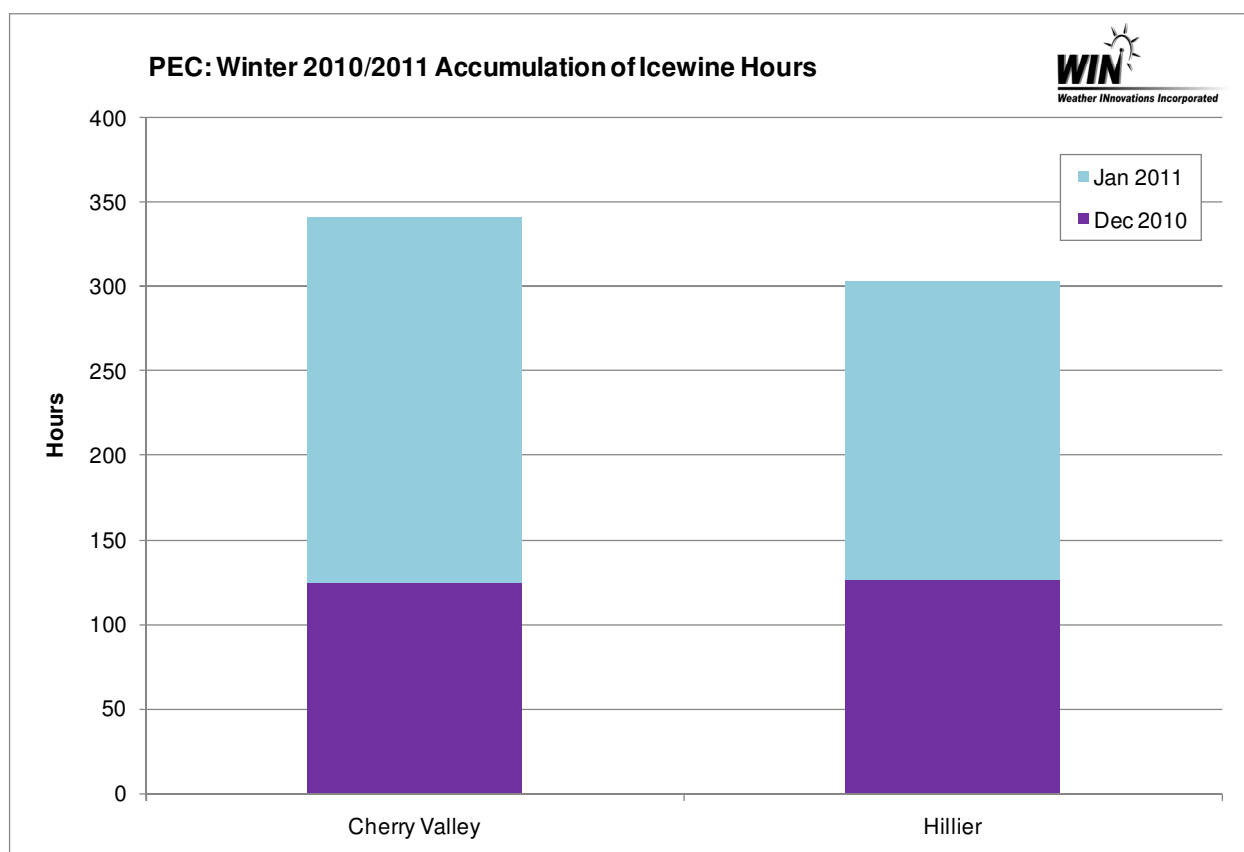


Weather INnovations Incorporated

ICEWINE HOURS ANALYSIS

As seen in the following two figures, the stations accumulated more icewine hours in January 2011, as compared to January 2010. The Cherry Valley station recorded 216 hours (compared to 121 hours in January 2010) and the Hillier station recorded 177 hours (compared to 122 hours in January 2010). There have been a significant number of hours for harvesting icewine grapes, in December 2010 and January 2011. The Cherry Valley station accumulated the most icewine hours (341) for the combined two months, as compared to 303 at the Hillier station.






SUMMARY

January 2011 temperatures were below normal in the Prince Edward County appellation; average temperatures for the month were 1.0°C to 2.2°C below the 30-year normal. The coldest events took place on the 16th-17th and the 23rd-24th, with the coldest January temperature reaching -35.2°C at the Hillier station. January 2011 provided a significant number of opportunities for harvesting icewine grapes, following a considerable number of hours accumulated in December 2010. These conditions provided an early harvest for growers who chose to produce icewine this year.

APPENDIX - Potential Icewine Harvest Opportunities for Prince Edward County:

PEC: Icewine Opportunities (6 Hour Minimum)		
Date & Time	Cherry Valley	Hillier
Potential Icewine Opportunity		
1/5/2011 17:00	-4.9	-4.5
1/5/2011 18:00	-6.2	-11.9
1/5/2011 19:00	-8.1	-16.4
1/5/2011 20:00	-8.7	-17.5
1/5/2011 21:00	-9.7	-18.7
1/5/2011 22:00	-8.2	-19.1
1/5/2011 23:00	-8.7	-18.7
1/6/2011 0:00	-10.1	-20
1/6/2011 1:00	-10.1	-18.7
1/6/2011 2:00	-9.8	-15.2
1/6/2011 3:00	-9.5	-13.5
1/6/2011 4:00	-9.8	-13.3
1/6/2011 5:00	-10.5	-12.8
1/6/2011 6:00	-10.4	-13
1/6/2011 7:00	-10.4	-14.4
1/6/2011 8:00	-10.7	-16.2
1/6/2011 9:00	-10.1	-14.2
1/6/2011 10:00	-7.1	-7.6
Potential Icewine Opportunity		
1/7/2011 18:00	-7.3	-7.7
1/7/2011 19:00	-6.6	-12.1
1/7/2011 20:00	-9.4	-16.2
1/7/2011 21:00	-11.1	-17.9
1/7/2011 22:00	-11.1	-19.2
1/7/2011 23:00	-11.3	-17.8
1/8/2011 0:00	-9.6	-13.1
1/8/2011 1:00	-9.7	-14.9
1/8/2011 2:00	-8.9	-13.5
1/8/2011 3:00	-7.2	-11.3
1/8/2011 4:00	-6.4	-10.4
1/8/2011 5:00	-6.1	-9.7
1/8/2011 6:00	-6.7	-9.2
1/8/2011 7:00	-8.1	-9.4
1/8/2011 8:00	-8.6	-9.8
1/8/2011 9:00	-8.6	-9.5
1/8/2011 10:00	-7.6	-8.4
1/8/2011 11:00	-6.1	-7.2



	Icewine Temperatures
	Below Icewine Temperatures

PEC: Icewine Opportunities (6 Hour Minimum)

Date & Time	Cherry Valley	Hillier
	Potential Icewine Opportunity	
1/8/2011 19:00	-6.4	-5.4
1/8/2011 20:00	-7	-7.1
1/8/2011 21:00	-8.6	-11
1/8/2011 22:00	-10	-12
1/8/2011 23:00	-11.1	-14.3
1/9/2011 0:00	-10.2	-17.3
1/9/2011 1:00	-10	-12.7
1/9/2011 2:00	-10.3	-12
1/9/2011 3:00	-10.4	-11.5
1/9/2011 4:00	-10.9	-11.6
1/9/2011 5:00	-11	-12
1/9/2011 6:00	-11.5	-12.6
1/9/2011 7:00	-11.5	-12.3
1/9/2011 8:00	-11.9	-13
1/9/2011 9:00	-12	-12.1
1/9/2011 10:00	-10.2	-9.8
1/9/2011 11:00	-9.1	-8.3
1/9/2011 12:00	-8.2	-6.8
1/9/2011 13:00	-6.8	-5.4
1/9/2011 14:00	-6.3	-4.9
	Potential Icewine Opportunity	
1/9/2011 18:00	-6.6	-7.2
1/9/2011 19:00	-7.2	-8
1/9/2011 20:00	-7.9	-8.5
1/9/2011 21:00	-8.6	-9.1
1/9/2011 22:00	-9	-9.6
1/9/2011 23:00	-9.1	-10.1
1/10/2011 0:00	-10	-10.7
1/10/2011 1:00	-10.6	-12.1
1/10/2011 2:00	-10.6	-12
1/10/2011 3:00	-10.7	-12.5
1/10/2011 4:00	-11.7	-12.4
1/10/2011 5:00	-11.9	-12.7
1/10/2011 6:00	-12.6	-13.9
1/10/2011 7:00	-12.4	-16.1
1/10/2011 8:00	-12.8	-17.8
1/10/2011 9:00	-12.6	-13.1



	Icewine Temperatures
	Below Icewine Temperatures



PEC: Icewine Opportunities (6 Hour Minimum)

Date & Time	Cherry Valley		Hillier	
1/10/2011 10:00	-11.7		-11.4	
1/10/2011 11:00	-10.2		-10.2	
1/10/2011 12:00	-9.3		-9.1	
1/10/2011 13:00	-8.3		-8.4	
1/10/2011 14:00	-7.1		-7.5	
Potential Icewine Opportunity				
1/10/2011 16:00	-7		-5.2	
1/10/2011 17:00	-8.3		-9.3	
1/10/2011 18:00	-11.1		-16.2	
1/10/2011 19:00	-12.7		-18.2	
1/10/2011 20:00	-12.6		-18.8	
1/10/2011 21:00	-11.9		-19.3	
1/10/2011 22:00	-11.5		-18.5	
1/10/2011 23:00	-12		-17.7	
1/11/2011 0:00	-12.2		-19.7	
1/11/2011 1:00	-12.1		-19.4	
1/11/2011 2:00	-12.2		-19.2	
1/11/2011 3:00	-13		-16	
1/11/2011 4:00	-13.5		-16.4	
1/11/2011 5:00	-13.4		-17	
1/11/2011 6:00	-13.1		-14	
1/11/2011 7:00	-13		-14.6	
1/11/2011 8:00	-12.6		-16.2	
1/11/2011 9:00	-12.1		-14.4	
1/11/2011 10:00	-10.7		-13.1	
1/11/2011 11:00	-9.6		-11.8	
1/11/2011 12:00	-9.2		-10.8	
1/11/2011 13:00	-9.3		-9.9	
1/11/2011 14:00	-8.7		-9.5	
1/11/2011 15:00	-8.5		-8.8	
1/11/2011 16:00	-8.7		-8.7	
1/11/2011 17:00	-9.2		-9.1	
1/11/2011 18:00	-9.3		-9.4	
1/11/2011 19:00	-9.5		-9.4	
1/11/2011 20:00	-9.6		-9.3	
1/11/2011 21:00	-9.5		-9.3	
1/11/2011 22:00	-9.2		-9.1	
1/11/2011 23:00	-9.1		-9.1	



	Icwine Temperatures
	Below Icwine Temperatures



PEC: Icewine Opportunities (6 Hour Minimum)

Date & Time	Cherry Valley		Hillier	
1/12/2011 0:00	-9.2	-9.2	-9.2	-9.2
1/12/2011 1:00	-9.2	-9.2	-9.1	-9.1
1/12/2011 2:00	-9.2	-9.2	-9.2	-9.2
1/12/2011 3:00	-9.4	-9.4	-9.3	-9.3
1/12/2011 4:00	-9.5	-9.5	-9.3	-9.3
1/12/2011 5:00	-9.5	-9.5	-9.3	-9.3
1/12/2011 6:00	-9.4	-9.4	-9.3	-9.3
1/12/2011 7:00	-9.5	-9.5	-9.3	-9.3
1/12/2011 8:00	-9.5	-9.5	-9.1	-9.1
1/12/2011 9:00	-9.3	-9.3	-8.8	-8.8
1/12/2011 10:00	-8.9	-8.9	-8.5	-8.5
1/12/2011 11:00	-8.4	-8.4	-8.2	-8.2
1/12/2011 12:00	-8	-8	-7.6	-7.6
1/12/2011 13:00	-7.7	-7.7	-7.3	-7.3
Potential Icewine Opportunity				
1/12/2011 17:00	-7.2	-7.2	-6.9	-6.9
1/12/2011 18:00	-8.3	-8.3	-13	-13
1/12/2011 19:00	-9.4	-9.4	-15.2	-15.2
1/12/2011 20:00	-9.4	-9.4	-9	-9
1/12/2011 21:00	-8.5	-8.5	-9.1	-9.1
1/12/2011 22:00	-8.6	-8.6	-8.7	-8.7
1/12/2011 23:00	-9	-9	-9.5	-9.5
1/13/2011 0:00	-9.6	-9.6	-10	-10
1/13/2011 1:00	-10.3	-10.3	-10.6	-10.6
1/13/2011 2:00	-11	-11	-11.1	-11.1
1/13/2011 3:00	-11.5	-11.5	-11.3	-11.3
1/13/2011 4:00	-11.4	-11.4	-11.3	-11.3
1/13/2011 5:00	-11.5	-11.5	-11.5	-11.5
1/13/2011 6:00	-11.6	-11.6	-11.7	-11.7
1/13/2011 7:00	-11.7	-11.7	-11.8	-11.8
1/13/2011 8:00	-11.8	-11.8	-12	-12
1/13/2011 9:00	-11.6	-11.6	-11.8	-11.8
1/13/2011 10:00	-11.2	-11.2	-10.9	-10.9
1/13/2011 11:00	-10.4	-10.4	-10.2	-10.2
1/13/2011 12:00	-9.6	-9.6	-9.4	-9.4
1/13/2011 13:00	-9.3	-9.3	-8.6	-8.6
1/13/2011 14:00	-9.4	-9.4	-8.5	-8.5
1/13/2011 15:00	-9.8	-9.8	-8.2	-8.2



	Icewine Temperatures
	Below Icewine Temperatures



PEC: Icewine Opportunities (6 Hour Minimum)

Date & Time	Cherry Valley		Hillier	
1/13/2011 16:00	-10.1		-8.8	
1/13/2011 17:00	-13		-16.3	
1/13/2011 18:00	-14		-23.1	
1/13/2011 19:00	-14.2		-23	
1/13/2011 20:00	-14.8		-23.7	
1/13/2011 21:00	-15.1		-23.5	
1/13/2011 22:00	-15.5		-22.5	
1/13/2011 23:00	-16		-24	
1/14/2011 0:00	-16		-23.6	
1/14/2011 1:00	-16		-23.5	
1/14/2011 2:00	-16		-22.4	
1/14/2011 3:00	-16.2		-21.8	
1/14/2011 4:00	-16.3		-21.9	
1/14/2011 5:00	-17.4		-22.8	
1/14/2011 6:00	-16.5		-19.6	
1/14/2011 7:00	-14.2		-14.8	
1/14/2011 8:00	-10.4		-12.2	
1/14/2011 9:00	-8.3		-9.7	
1/14/2011 10:00	-5.6		-6.7	
Potential Icewine Opportunity				
1/14/2011 13:00	-5.4		-4.6	
1/14/2011 14:00	-7.1		-8.2	
1/14/2011 15:00	-10.5		-16.2	
1/14/2011 16:00	-12.6		-18.4	
1/14/2011 17:00	-13.2		-15.9	
1/14/2011 18:00	-11.5		-12.6	
1/14/2011 19:00	-12		-14.2	
1/14/2011 20:00	-11.1		-12.5	
1/14/2011 21:00	-10.2		-11.1	
1/14/2011 22:00	-8.5		-9.1	
1/14/2011 23:00	-7.2		-8.4	
1/15/2011 0:00	-6.5		-8.1	
1/15/2011 1:00	-6.3		-9.1	
1/15/2011 2:00	-5.4		-8.7	
1/15/2011 3:00	-4.3		-8.8	
1/15/2011 4:00	-4.2		-9	
1/15/2011 5:00	-4.1		-6.3	
1/15/2011 6:00	-4.6		-4.3	



Weather INnovations Incorporated

	Icewine Temperatures
	Below Icewine Temperatures



Weather INnovations Incorporated

PEC: Icewine Opportunities (6 Hour Minimum)

Date & Time	Cherry Valley	Hillier
	Potential Icewine Opportunity	
1/16/2011 1:00	-6	-6.8
1/16/2011 2:00	-7.5	-8
1/16/2011 3:00	-9.1	-10
1/16/2011 4:00	-10.3	-17.2
1/16/2011 5:00	-10.4	-16.6
1/16/2011 6:00	-10.9	-13.6
1/16/2011 7:00	-10.4	-10.6
1/16/2011 8:00	-10.5	-10
1/16/2011 9:00	-10.5	-10.3
1/16/2011 10:00	-11.3	-11.1
1/16/2011 11:00	-11.8	-11.5
1/16/2011 12:00	-12.1	-11.4
1/16/2011 13:00	-12.4	-11.8
1/16/2011 14:00	-13.4	-13.7
1/16/2011 15:00	-14.5	-16.1
1/16/2011 16:00	-15.2	-18.2
1/16/2011 17:00	-16.5	-19.7
1/16/2011 18:00	-17.5	-20.8
1/16/2011 19:00	-18.6	-22.5
1/16/2011 20:00	-19.7	-24.6
1/16/2011 21:00	-21	-21.1
1/16/2011 22:00	-22	-24.1
1/16/2011 23:00	-22.8	-31
1/17/2011 0:00	-23.5	-32.5
1/17/2011 1:00	-25.1	-32.5
1/17/2011 2:00	-24.5	-33.4
1/17/2011 3:00	-24.3	-34
1/17/2011 4:00	-24	-33.7
1/17/2011 5:00	-23.8	-30.4
1/17/2011 6:00	-21.1	-24.2
1/17/2011 7:00	-16.3	-20.4
1/17/2011 8:00	-13.1	-16.6
1/17/2011 9:00	-11.3	-13.5
1/17/2011 10:00	-10.2	-11.2
1/17/2011 11:00	-9.8	-9.9
1/17/2011 12:00	-10.7	-11.1
1/17/2011 13:00	-10.2	-11.2



	Icewine Temperatures
	Below Icewine Temperatures



PEC: Icewine Opportunities (6 Hour Minimum)

Date & Time	Cherry Valley	Hillier
1/17/2011 14:00	-9.8	-9.9
1/17/2011 15:00	-8.8	-9.3
1/17/2011 16:00	-9.1	-9.5
1/17/2011 17:00	-9.7	-10.7
1/17/2011 18:00	-10.8	-13.6
1/17/2011 19:00	-9.5	-15.1
1/17/2011 20:00	-7.7	-15.1
1/17/2011 21:00	-6.7	-15.6
1/17/2011 22:00	-5.6	-15.2
1/17/2011 23:00	-4.8	-14.8
1/18/2011 0:00	-3.2	-13.2
1/18/2011 1:00	-2.2	-5.8

Potential Icewine Opportunity

1/19/2011 9:00	-7.3	-7.6
1/19/2011 10:00	-7.9	-8.2
1/19/2011 11:00	-8.7	-8.7
1/19/2011 12:00	-8.9	-9.1
1/19/2011 13:00	-9.1	-9.4
1/19/2011 14:00	-9.5	-9.5
1/19/2011 15:00	-9.2	-9.5
1/19/2011 16:00	-9.5	-9.5
1/19/2011 17:00	-9.7	-9.6
1/19/2011 18:00	-10.1	-9.9
1/19/2011 19:00	-10.4	-10.2
1/19/2011 20:00	-10.7	-10.3
1/19/2011 21:00	-10.9	-10.6
1/19/2011 22:00	-11.2	-10.8
1/19/2011 23:00	-11.2	-10.9
1/20/2011 0:00	-11.1	-10.9
1/20/2011 1:00	-11.1	-10.8
1/20/2011 2:00	-11	-10.7
1/20/2011 3:00	-10.9	-10.8
1/20/2011 4:00	-10.9	-10.7
1/20/2011 5:00	-11.4	-14.5
1/20/2011 6:00	-11.7	-16.4
1/20/2011 7:00	-12.7	-19.7
1/20/2011 8:00	-12.6	-16.3
1/20/2011 9:00	-12	-13.6



	Icewine Temperatures
	Below Icewine Temperatures



PEC: Icewine Opportunities (6 Hour Minimum)

Date & Time	Cherry Valley		Hillier	
1/20/2011 10:00	-11.3		-11.4	
1/20/2011 11:00	-10.4		-10	
1/20/2011 12:00	-9		-7.9	
1/20/2011 13:00	-7.8		-6.1	
Potential Icewine Opportunity				
1/20/2011 17:00	-7.3		-7.2	
1/20/2011 18:00	-8		-8.3	
1/20/2011 19:00	-8.3		-8.6	
1/20/2011 20:00	-8.6		-8.9	
1/20/2011 21:00	-9.2		-9.3	
1/20/2011 22:00	-9.4		-9.4	
1/20/2011 23:00	-9.3		-9.5	
1/21/2011 0:00	-8.9		-9.3	
1/21/2011 1:00	-8.8		-9.2	
1/21/2011 2:00	-8.8		-9.2	
1/21/2011 3:00	-9.1		-9.3	
1/21/2011 4:00	-9.2		-9.3	
1/21/2011 5:00	-9.3		-9.5	
1/21/2011 6:00	-9.6		-9.7	
1/21/2011 7:00	-10.2		-11.2	
1/21/2011 8:00	-12.7		-17.3	
1/21/2011 9:00	-11.5		-15.7	
1/21/2011 10:00	-10		-9.9	
1/21/2011 11:00	-7.5		-9.1	
1/21/2011 12:00	-5.3		-7.2	
Potential Icewine Opportunity				
1/21/2011 17:00	-6.7		-6.6	
1/21/2011 18:00	-7.8		-8.2	
1/21/2011 19:00	-8.5		-9.2	
1/21/2011 20:00	-9.3		-10	
1/21/2011 21:00	-10		-10.9	
1/21/2011 22:00	-10.5		-11.7	
1/21/2011 23:00	-10.8		-12	
1/22/2011 0:00	-11.2		-12.6	
1/22/2011 1:00	-11.7		-13.7	
1/22/2011 2:00	-12.5		-14.3	
1/22/2011 3:00	-13.8		-15.7	
1/22/2011 4:00	-15.6		-18.8	



	Icewine Temperatures
	Below Icewine Temperatures



PEC: Icewine Opportunities (6 Hour Minimum)

Date & Time	Cherry Valley	Hillier
1/22/2011 5:00	-17	-19
1/22/2011 6:00	-18.3	-24
1/22/2011 7:00	-18.9	-26.6
1/22/2011 8:00	-19	-25.8
1/22/2011 9:00	-17.8	-18.7
1/22/2011 10:00	-15.9	-15.9
1/22/2011 11:00	-14.4	-14.4
1/22/2011 12:00	-11.8	-12.4
1/22/2011 13:00	-9.8	-10.6
1/22/2011 14:00	-10.1	-8.5
1/22/2011 15:00	-9.8	-10.1
1/22/2011 16:00	-10.2	-10.6
1/22/2011 17:00	-11	-11
1/22/2011 18:00	-11.4	-11.5
1/22/2011 19:00	-11.3	-11.7
1/22/2011 20:00	-11.3	-11.7
1/22/2011 21:00	-11.4	-11.7
1/22/2011 22:00	-11.3	-11.9
1/22/2011 23:00	-11.2	-12.1
1/23/2011 0:00	-12.3	-13.1
1/23/2011 1:00	-15.5	-15.1
1/23/2011 2:00	-16.6	-16.4
1/23/2011 3:00	-17.1	-16.9
1/23/2011 4:00	-17.6	-17.5
1/23/2011 5:00	-18.3	-18.8
1/23/2011 6:00	-19.8	-20.1
1/23/2011 7:00	-20.9	-20.7
1/23/2011 8:00	-21.9	-21.9
1/23/2011 9:00	-21.8	-21.7
1/23/2011 10:00	-21.5	-21.3
1/23/2011 11:00	-20.8	-20.6
1/23/2011 12:00	-19.6	-19.9
1/23/2011 13:00	-18.9	-19.2
1/23/2011 14:00	-18.4	-18.7
1/23/2011 15:00	-18	-17.8
1/23/2011 16:00	-18.2	-17.5
1/23/2011 17:00	-19.2	-19.3
1/23/2011 18:00	-22.8	-28.8



	Icwine Temperatures
	Below Icwine Temperatures



PEC: Icewine Opportunities (6 Hour Minimum)

Date & Time	Cherry Valley	Hillier
1/23/2011 19:00	-24.1	-33.1
1/23/2011 20:00	-23.7	-34.6
1/23/2011 21:00	-23.8	-34.6
1/23/2011 22:00	-24.8	-34.3
1/23/2011 23:00	-25.2	-35
1/24/2011 0:00	-24.4	-32.4
1/24/2011 1:00	-24.4	-25.2
1/24/2011 2:00	-23.8	-24.7
1/24/2011 3:00	-23.7	-24.7
1/24/2011 4:00	-24.5	-25.5
1/24/2011 5:00	-25.3	-26.4
1/24/2011 6:00	-25.3	-27.1
1/24/2011 7:00	-25.8	-27.8
1/24/2011 8:00	-25.7	-27.9
1/24/2011 9:00	-23.7	-27.1
1/24/2011 10:00	-20.7	-24.6
1/24/2011 11:00	-18.2	-21.2
1/24/2011 12:00	-17.4	-18.4
1/24/2011 13:00	-15.8	-17.1
1/24/2011 14:00	-14.6	-16
1/24/2011 15:00	-14.6	-15.2
1/24/2011 16:00	-14.9	-15.2
1/24/2011 17:00	-15.1	-15.8
1/24/2011 18:00	-15	-16.6
1/24/2011 19:00	-14.9	-16.1
1/24/2011 20:00	-14.8	-16.1
1/24/2011 21:00	-14.5	-16.5
1/24/2011 22:00	-14	-16.4
1/24/2011 23:00	-13.3	-15.9
1/25/2011 0:00	-12.2	-15.7
1/25/2011 1:00	-11.7	-15.2
1/25/2011 2:00	-11	-14.7
1/25/2011 3:00	-11.1	-14.5
1/25/2011 4:00	-12.6	-14.5
1/25/2011 5:00	-12.7	-14.4
1/25/2011 6:00	-12.5	-14.1
1/25/2011 7:00	-11.3	-13.8
1/25/2011 8:00	-12.1	-13.9



	Icewine Temperatures
	Below Icewine Temperatures



PEC: Icewine Opportunities (6 Hour Minimum)

Date & Time	Cherry Valley	Hillier
1/25/2011 9:00	-12.2	-13.7
1/25/2011 10:00	-12.3	-13.3
1/25/2011 11:00	-11.5	-12.2
1/25/2011 12:00	-9.7	-10.2
1/25/2011 13:00	-6.3	-6.1
Potential Icewine Opportunity		
1/29/2011 17:00	-4.2	-5.2
1/29/2011 18:00	-7.7	-11.6
1/29/2011 19:00	-8.6	-10.3
1/29/2011 20:00	-7.5	-8
1/29/2011 21:00	-7.4	-14.1
1/29/2011 22:00	-7.3	-11.7
1/29/2011 23:00	-7	-8.9
1/30/2011 0:00	-7.5	-8.4
1/30/2011 1:00	-8	-8.2
1/30/2011 2:00	-8.4	-8.7
1/30/2011 3:00	-9.1	-9.3
1/30/2011 4:00	-10.3	-10.3
1/30/2011 5:00	-9.8	-9.6
1/30/2011 6:00	-9.6	-9.8
1/30/2011 7:00	-9.2	-9.7
1/30/2011 8:00	-9.1	-9.4
1/30/2011 9:00	-8.9	-9.1
1/30/2011 10:00	-8.4	-7.9
1/30/2011 11:00	-5.9	-4.8
Potential Icewine Opportunity		
1/30/2011 18:00	-7.1	-7.6
1/30/2011 19:00	-8.1	-9.3
1/30/2011 20:00	-9.5	-10.2
1/30/2011 21:00	-10.4	-10.9
1/30/2011 22:00	-11.2	-11.5
1/30/2011 23:00	-12.6	-13.3
1/31/2011 0:00	-13.8	-15.4
1/31/2011 1:00	-15	-14.8
1/31/2011 2:00	-16.4	-16.3
1/31/2011 3:00	-18.1	-19.5
1/31/2011 4:00	-19.8	-21.7
1/31/2011 5:00	-19.9	-21



	Icewine Temperatures
	Below Icewine Temperatures

PEC: Icewine Opportunities (6 Hour Minimum)

Date & Time	Cherry Valley	Hillier
1/31/2011 6:00	-21.1	-23.7
1/31/2011 7:00	-21	-22.9
1/31/2011 8:00	-20.8	-21.9
1/31/2011 9:00	-19.8	-19.9
1/31/2011 10:00	-17.8	-18
1/31/2011 11:00	-15.5	-16.6
1/31/2011 12:00	-14.5	-15
1/31/2011 13:00	-13.2	-13.2
1/31/2011 14:00	-12.7	-12.9
1/31/2011 15:00	-12.9	-12.3
1/31/2011 16:00	-13.8	-12.9
1/31/2011 17:00	-14.8	-13.8
1/31/2011 18:00	-15.1	-14.4
1/31/2011 19:00	-14.9	-14.6
1/31/2011 20:00	-14.9	-14.9
1/31/2011 21:00	-14.7	-14.7
1/31/2011 22:00	-14.4	-14.5
1/31/2011 23:00	-14.1	-14.4



	Icwine Temperatures
	Below Icwine Temperatures

